



LVT Looselay Creation & Saga²

The Reference in LVT

Gerflor[®]

Leader en solutions plombantes depuis 30 ans

Pioneer in looselay solutions for 30 years



Ideal bureaux & tertiaire

Pose sur planchers techniques

Ideal for retail & offices

Installation on raised access floor



Pose facile & rapide

Temps de gommage réduit, sans clipsage

Easy & Fast installation

Reduced adhesive curing time, no interlocking



Mix & Match

Nombreux calepinages décors, formats lames & dalles carrées, LVT et moquettes

Mix & Match

Variety of designs, Planks & Square Tiles formats, LVT & carpets



Pas de joint de dilatation

Meilleure stabilité dimensionnelle

No Expansion joint

Best dimensional stability



100 % recyclable

Dépose facile

100 % Recyclable

Easy replacement



Qu'est ce qu'une pose plombante ?

What is a Looselay Installation?



Avec colle poissante

With pressure sensitive adhesive



Remplacement lame ou dalle facile

Easy to replace a tile or plank



PLINTE DÉCOR / DESIGN SKIRTING (PVC)
6086 + code couleur / colour code

TAPIS D'ENTRÉE / ENTRANCE MAT
Romat GT kit 1719 (profilés inclus / profiles included)

FINITIONS : plus d'information sur gerflor.fr
FINISHES: more details on gerflor.com

Creation 55 Looselay
Fabrik Mix Dark Grey / Swiss Oak Pearl

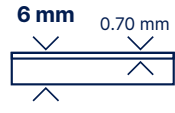
Creation 70 Looselay
Dock Taupe / Dock Grey

Mix & Match Dalles & lames

Tiles & planks



Creation 70 Looselay

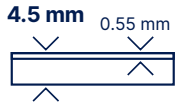


**Pose sur carrelage
si joint < 5mm**
Renovation on joints
up to 5mm



Envers gaufré
Waffle backing

Creation 55 Looselay



**Pose sur carrelage
si joint < 4mm**
Renovation on joints
up to 4mm



Envers gaufré
Waffle backing

Pose sans colle jusqu'à 30m²
Adhesive free up to 30m²

Creation 55 Looselay Acoustic



**Pose sur carrelage
si joint < 4mm**
Renovation on joints
up to 4mm



-19 dB



ÉCO-RESPONSABLE
100% recyclable
35% matériaux recyclés



ÉMISSIONS TCOV
TCOV <10 micrograms
après 28 jours
Certifié Floorscore®

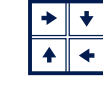
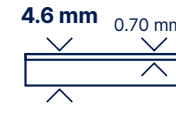
ECO-RESPONSIBLE
100% recyclable
35% recycled content

TVOC EMISSIONS
TVOC <10 micrograms
after 28 days
Floorscore® Certified

La dalle éco-responsable & confortable

Sustainability & comfort in one tile!

SAGA²



**Pose sur carrelage
si joint < 5mm**
Renovation on joints
up to 5mm



CONFORT SUPÉRIEUR
BETTER COMFORT



ORGANIC INSIDE:
Envers composé
à 42% de matériaux
bio sourcés

ORGANIC INSIDE:
42% of the backing
made with bio content



ÉMISSIONS TCOV
TCOV < 10 micrograms/m³
(après 28 jours) en dessous
des seuils de détection
Pas de Formaldéhyde

TVOC EMISSIONS
TVOC <10 micrograms/m³
after 28 days better than norms
requirements
No formaldehyde emission



ÉCO-RESPONSABLE
100% recyclable
55% matériaux
recyclés

ECO-RESPONSIBLE
100% recyclable
55% recycled,
content



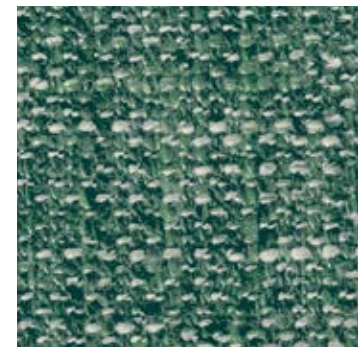
Creation 55 Looselay
Swiss Oak Golden / Twist



Saga²
Rough Textile Beige



1077 Tatami Savane 600x600 mm



1082 Gentleman Peppermint 600x600 mm



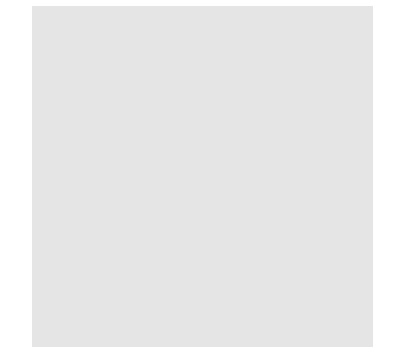
1060 Pure Concrete Light 914x914 mm



Creation 70 Looselay - Moon Island / Tatami Savane



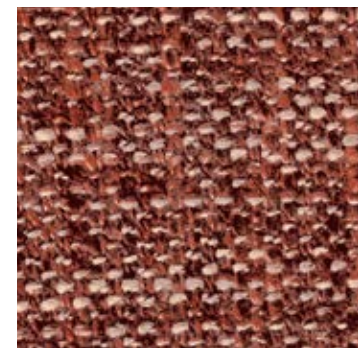
0538 Midwest 229x1220 mm



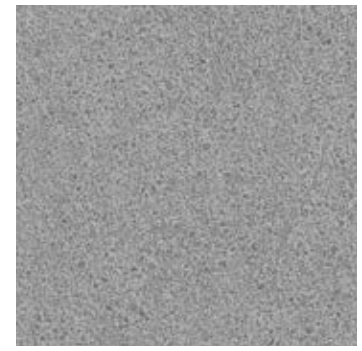
ENVERS GAUFFRÉ / WAFFLE BACKING



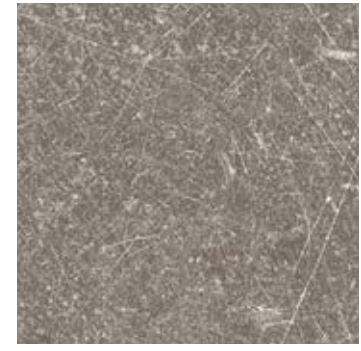
1078 Tatami Raffia 600x600 mm



1080 Gentleman Garance 600x600 mm



1061 Pure Concrete Medium 914x914 mm



0087 Dock Taupe 914x914 mm



0356 Denim Wood 229x1220 mm



1054 Onka Honey 229x1220 mm



Creation 70 Looselay - Diesel Burnt / Gentleman Taupe



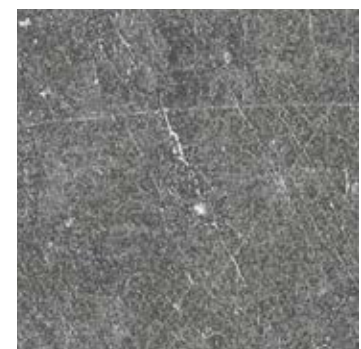
1079 Tatami Smoked 600x600 mm



1058 Gentleman Grey 600x600 mm



1081 Gentleman Indigo 600x600 mm



0085 Dock Grey 914x914 mm



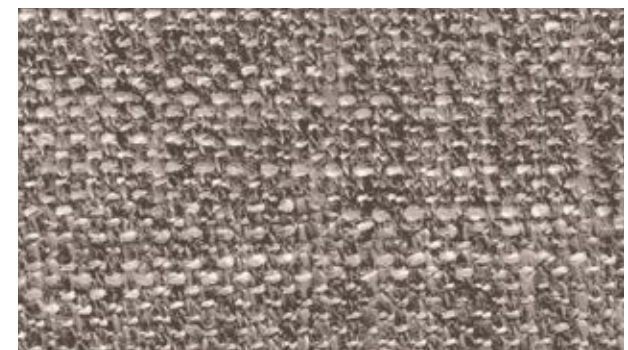
0357 Portobello 229x1220 mm



1075 Diesel Nala 229x1220 mm



1076 Gentleman Tweed 229x1220 mm



1083 Gentleman Taupe 229x1220 mm



1062 Pure Concrete Dark 914x914 mm



0358 Moon Island 229x1220 mm



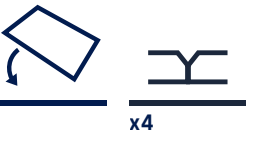
1074 Diesel Burnt 229x1220 mm

NIVEAU DE CONTRASTE DU DÉCOR
DESIGN SHADE VARIATION: Léger Light Moyen Medium Fort High

NIVEAU DE CONTRASTE DU DÉCOR
DESIGN SHADE VARIATION: Léger Light Moyen Medium Fort High

Creation 55 Looselay

Creation 55 Looselay Acoustic



0504 Twist LL | LL AC 229x1220 mm



0441 Honey Oak LL | LL AC 229x1220 mm



0448 Malua Bay LL | LL AC 229x1220 mm



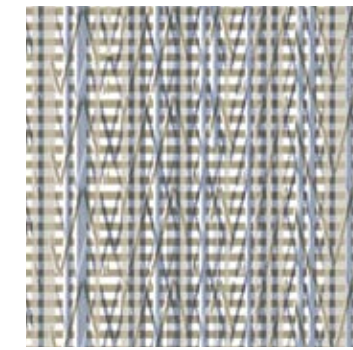
Creation 55 Looselay Acoustic - Arena / Carmel



1283 Urban Street Light LL 600x600 mm



1284 Urban Street Medium LL 600x600 mm



0876 Ponto Cruz Navy LL 500x500 mm



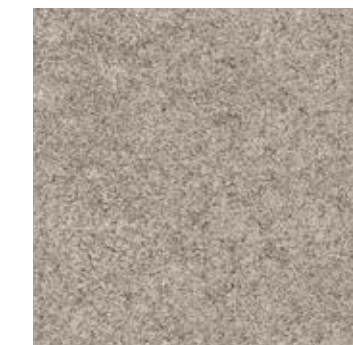
0870 Quartet Honey LL 229x1220 mm



0859 Quartet Fauve LL 229x1220 mm



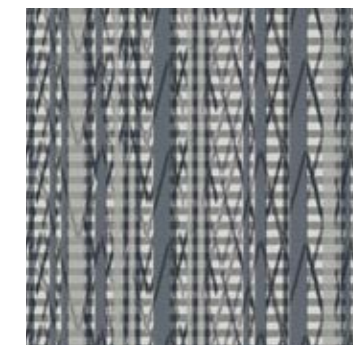
0853 Bostonian Oak Beige LL 229x1220 mm



0868 Bloom Uni Taupe LL 600x600 mm



0869 Bloom Uni Grey LL 600x600 mm



0878 Ponto Cruz City LL 500x500 mm



0347 Ballerina LL | LL AC 229x1220 mm



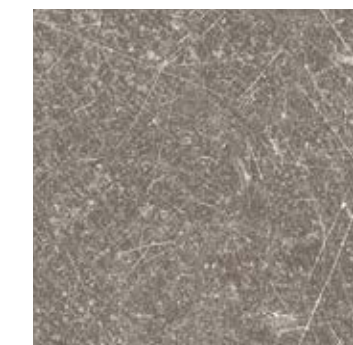
0455 Long Board LL | LL AC 229x1220 mm



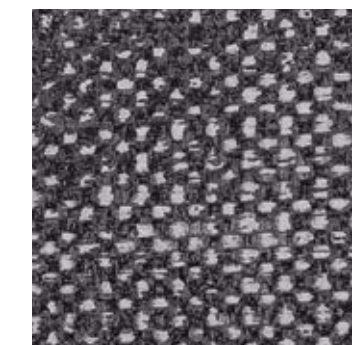
0456 Ranch LL | LL AC 229x1220 mm



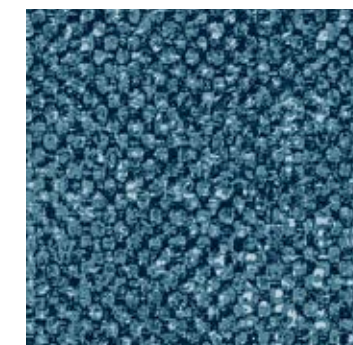
0060 Arena LL | LL AC 229x1220 mm



0618 Carmel LL | LL AC 500x500 mm



1269 Fabrik Mix Dark Grey LL 600x600 mm



1270 Fabrik Mix Indigo LL 600x600 mm



0796 Swiss Oak Golden LL | LL AC 229x1220 mm



0871 Bostonian Oak LL 229x1220 mm



0447 Amador LL | LL AC 229x1220 mm



0846 Swiss Oak Pearl LL | LL AC 229x1220 mm



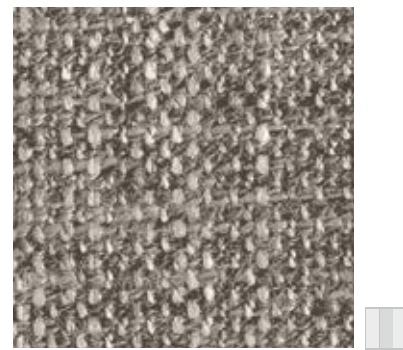
0436 Riverside LL 600x600 mm



0374 Parker Station LL | LL AC 500x500 mm



0062 Rough Textile Beige 500x500 mm



0089 Gentleman Taupe 500x500 mm



0029 Gentleman Beige 500x500 mm



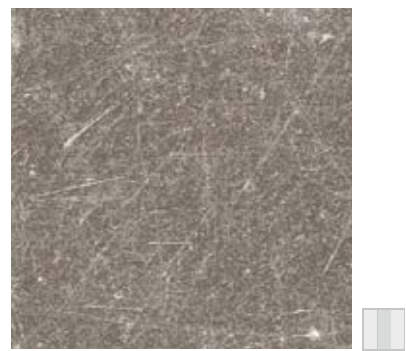
0028 Fiber Silver **METAL EFFECT** 500x500 mm



0033 Spider Beige 500x500 mm



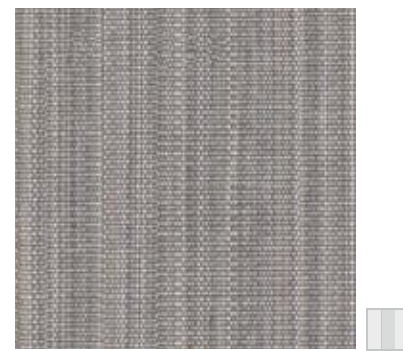
0026 Fiber Copper **METAL EFFECT** 500x500 mm



0087 Dock Taupe 500x500 mm



0063 Rough Textile Grey 500x500 mm



0021 Barma Sweet 500x500 mm



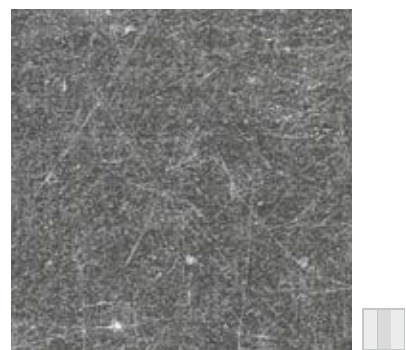
0032 Mozaic Grey 500x500 mm



0025 Barma Beige 500x500 mm



0577 Albion 500x500 mm



0085 Dock Grey 500x500 mm



0088 Gentleman Grey 500x500 mm



0030 Gentleman Blue 500x500 mm



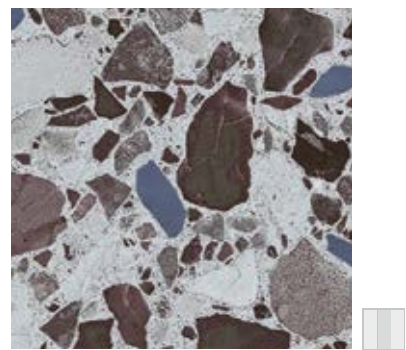
0039 Spider Blue 500x500 mm



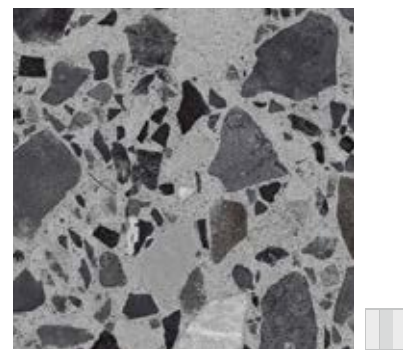
0023 Barma Mystery 500x500 mm



0579 Amarante 500x500 mm



1089 Dalma Burgundy 500x500 mm



1088 Dalma Grey 500x500 mm



0027 Fiber Heavy Metal **METAL EFFECT** 500x500 mm



0017 Kadina City 500x500 mm



0572 Amarante Dark 500x500 mm

NIVEAU DE CONTRASTE DU DÉCOR
DESIGN SHADE VARIATION:





Creation 70 Looselay - Portobello / Pure Concrete Medium



Saga² - Dalma Grey

LVT Looselay Creation & Saga²

gerflor.com / follow us   



* information sur le niveau d'émission de substances volatiles dans l'air intérieur, présentant un risque de toxicité par inhalation, sur une échelle de classe allant de A+ (très faibles émissions) à C (fortes émissions).

	CREATION 70 LOOSELAY	CREATION 55 LOOSELAY	CREATION 55 LOOSELAY ACOUSTIC	SAGA ²
--	----------------------	----------------------	-------------------------------	-------------------

DESCRIPTION / BESCHREIBUNG / BESCHRIJVING / DESCRIPCIÓN / DESCRIZIONE

55 (33) 70 (43)

Épaisseur totale / Total Thickness / Gesamtdicke / Totale dikte / Espesor total / Espessura total / Spessore totale	EN ISO24346	mm	6	4.50	5.50	4.60
Épaisseur couche d'usure / Thickness of the wearlayer / Dicke der Nuttschicht / Dikte van de slijtlaag / Espesor capa de uso / Espessura camada de desgaste / Spessore strato di usura	EN ISO24340	mm	0.70	0.55	0.55	0.63 0.70
Poids / Weight / Flächengewicht / Gewicht / Peso / Peso / Peso	EN ISO 23997	g/m ²	10000	7500	7600	5495 5595
Format / Size / Format / Afmetingen / Dimensiones / Dimensões / Dimensioe	EN ISO 24342	mm	229 x1220 600 x 600 914 x 914	229 x1220 500 x 500 600 x 600	229 x1220 500x500	500 x 500
Nombre de lames/dalles - m ² par boîte / Number of planks & tiles - m ² per box	-	-	6 / 1.68 m ² 4 / 1.44 m ² 2 / 1.67 m ²	8 / 2.23 m ² 8 / 2.0 m ² 6 / 2.16 m ²	8 / 2.23 m ² 8 / 2.0 m ²	10 / 2.5 m ²

CLASSIFICATION / KLASSIFIKATION / CLASSIFICATIE / CLASIFICACIONES / CLASSIFICAÇÕES / CLASSIFICAZIONI

Norme/Spécification produit / Norm/Product Specification / Produktnorm / Technische eigenschaften / Normas / Normas / Norma prodotto	-	-	EN ISO 10582	EN ISO 10582	EN 651	EN 652
Classement européen / European Classification / Europäische Klassifizierung / Europese classificatie / Classificação europea / Classificação Europeia / Europea	EN ISO 10874	classe	34 - 43	33 - 42	33 - 42	33 - 42 34 - 42
Classement UPEC	-	-	U4P3E2C2	U3P3E2C2	Pour pose dans les locaux classés U3P3E1/2C2	U3P3E2C2 U4P3E2C2
Avis technique	-	n° AT	12/19-1786_V2	12/19-1786_V2	-	12/13-1655
Appréciation Technique Expérimentale	-	n° Atex	-	-	2769_V1	-
Classement Feu / Fire Rating / Brandverhalten / Brand classificatie / Fuego / Fogo / Reazione al fuoco	EN 13 501-1	classe	Bfl-s1	Bfl-s1	Bfl-s1	Bfl-s1
Potentiel de charge / Static Electrical Propensity / Begehaufladung / Elektrische eigenschaften / Comportamiento electrostático / Comportamento electrostático / Resistenza elettrica	EN 1815	kV	< 2	< 2	< 2	< 2
Glissance humide / Slip Resistance Wet / Rutschhemmung / Anti-slip / Deslizamiento húmedo / Escorregamento húmido / Scivolosità umida ⁽¹⁾	DIN 51130	classe	R10	R10	R10	R10

PERFORMANCES / TECHNISCHE EIGENSCHAFTEN / TESTRESULTAAT / CUALIDADES TÉCNICAS / PERFORMANCES / CARATTERISTICHE TECNICHE

Résistance à l'usure / Wear Resistance / Verschleißverhalten / Slijtvastheid / Abrasion / Abrasão / Resistenza all'abrasione	EN 660.2	mm ³	< 2.0	< 2.0	< 2.0	< 2
Groupe d'abrasion / Wear Group / Verschleißgruppe / Groep slijtvastheid / Grupo de abrasión / Grupo de abrasão / Gruppo di abrasione	-	-	T	T	T	T
Teneur en agent liant / Type Binder content / Bindemittelgehalt / Contenido en ligante / Conteúdo em ligante	EN ISO 10582	type	I	I	I	I
Stabilité dimensionnelle (norme) / Dimensional stability (norm) / Maßstabilität (norm) / Maatvastheid (norm) / Estabilidad Dimensional (Exigencia) / Estabilidade dimensional (normalização) / Stabilità dimensionale (requisito normativo)	EN ISO 23999	%	< 0.15	< 0.15	< 0.15	< 0.15
Stabilité dimensionnelle (valeur moyenne mesurée) / Dimensional stability (average measured value) / Maßstabilität (Durchschnittswert) / Maatvastheid (gemeten gemiddelde waarde) / Estabilidad Dimensional (Valor medido) / Estabilidade Dimensional (Valor medio) / Stabilità dimensionale (rilevata)	-	%	< 0.05	< 0.05	< 0.05	-
Poinçonnement statique rémanent / Residual Indentation / Resteindruck / Indrukbelasting / Punzonamiento / Punçoamento / Impronta	EN ISO 24343-1	mm	< 0.10	< 0.05	< 0.20	< 0.13
Isolation acoustique bruits de chocs / Impact sound insulation / Trittschallverbesserungsmaß / Geluidsisolatie / Acústica / Isolamento acústico	EN ISO 717-2	dB	9	7	19	15
Sonorité à la marche / Room Impact / Raumschall / Loopgeluid / Rumore al calpestio / Sonoridad en la pisada / Sonoridade ao andar	NF S 31074	dB	73	73	70	< 65
Essai de la chaise à roulettes / Castor chair test / Stuhlrollenbeanspruchung / Rolweerstand bureaustoelen / Determinación del efecto de una silla con ruedas / Resistência a cadeiras de rodas / Resistenza al passaggio di sed (Type W)	ISO 4918	-	OK	OK	OK	OK
Conductivité thermique / Thermal Conductivity / Wärmeleitfähigkeit / Thermische weerstand / Conductividad térmica / Condutividade térmica / Resistenza termica / Värmeledningsmotstånd / Varmemotstånd	EN ISO 10456	W/(m.K)	0.25	0.25	0.25	0.25
Solidité lumière / Colour Fastness / Lichtechtheid / Lichtechtheid / Resistencia a la luz / Estabilidade das cores / Solidità alla luce	EN 20 105 - B02	degré	≥ 6	≥ 6	≥ 6	≥ 6
Traitement de surface / Surface Treatment / Oberflächenvergütung / Oppervlaktebehandling / Tratamiento de superficie / Tratamento de superficie / Trattamento di superficie	-	-	PUR+ Matt	ProtecShield™	ProtecShield™	ProtecSol®
Résistance aux produits chimiques / Chemical Products Resistance / Verhalten gegenüber Chemikalien / Chemische bestendigheid / Resistencia a los productos químicos / Resistência aos produtos químicos / Resistenza ai prodotti chimici ⁽²⁾	EN ISO 26987	-	OK	OK	OK	OK

ENVIRONNEMENT/QUALITE DE L'AIR INTERIEUR / ENVIRONMENT/INDOOR AIR QUALITY / UMWELT/RAUMLUFTQUALITÄT / MEDIO AMBIENTE/CALIDAD INTERIOR DEL AIRE INTERIOR / MEIO AMBIENTE/QUALIDADE DO AR INTERIOR

TVOC après 28 jours / TVOC after 28 days / TVOC (28 Tage) / TVOC (28 dagen) / TVOC (28 dias) / TVOC (28 dias) / TVOC (28 giorni) / TVOC (28 dagar) / TVOC (28 dager)	ISO 16000-6	micrograms / m ³	< 10	< 10	< 10	< 10
---	-------------	-----------------------------	------	------	------	------

MARQUAGE CE / CE MARKING / CE KENNZEICHNUNG / EG_CONFORMITEITSMERK / MARCA DE CONFORMIDAD CE / MARCA DE CONFORMIDADE CE / MARCATURA CE DI CONFORMITA

	EN 14041	-	
---	----------	---	---

(1) Plan incliné avec huile / Ramp test with oil / Schiefe Ebene
(2) Beständig gegenüber nicht färbenden alkoholhaltigen Handdesinfektionsmitteln,
Haushaltschemikalien und verdünnten Säuren und Laugen bei kurzzeitiger Einwirkung.

IMPORTANT : Les informations contenues dans ce document sont valables à compter du :
01/05/2022 et susceptibles d'être modifiées à tout moment et sans préavis. L'évolution de la
technique étant permanente, il appartient à notre clientèle avant toute mise en œuvre, de
vérifier auprès de nos services que le présent document est bien celui en vigueur.

IMPORTANT : The information contained in this document is valid from 01/05/2022
and is subject to change at any time without notice. In the context of constantly
changing technology, our customers are responsible, prior to any use, for
checking with us that this document is the version in force.

we care / we act Our Commitments for a Sustainable future


**CARBON
FOOTPRINT***
-20 % kg
CO₂ equivalent/m²
between 2020 and 2025


**BIO-SOURCED
CONTENT****
10 % by 2025


**RECYCLED
CONTENT**
30 % by 2025


**ADHESIVE
FREE*****
35 % by 2025


**ANNUAL VOLUME
RECYCLED**
60 000 t by 2025

Gerflor[®]

* Scopes 1 and 2 defined in the GHG protocol ** % of activity with biosourced materials *** % of activity - adhesive free solution